

17413 Music Box Display

2 Person Assembly Recommended

List of Parts

Part 1 - 4, Sides **Part 2 - 24, Connecting bolts**



Part 3 - 24, Cam lock fasteners



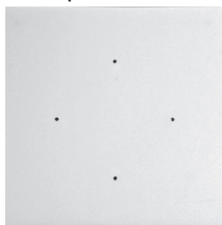
Part 4 - 8, Allen Key Screws



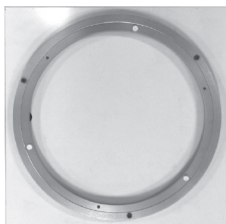
Part 5 - 6, Wood screws



Part 6 - Top Base



Part 7 - Bottom Base (w/ Lazy Susan turner)



Tools

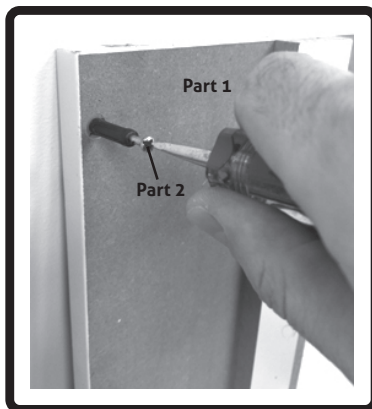
Part 9 - Allen Key



Phillip Screwdriver (not included)



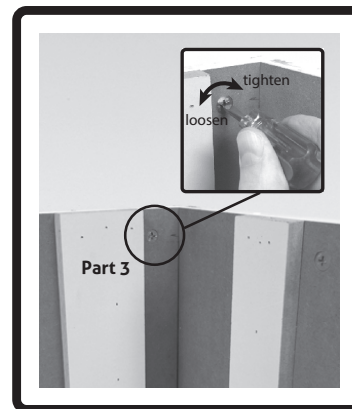
Part 8 - Topper



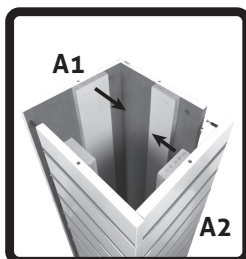
Step 1- Secure screws (part 2) into each plastic female thread on all 4 sides (part 1). There are 6 threads on each side (part 1).



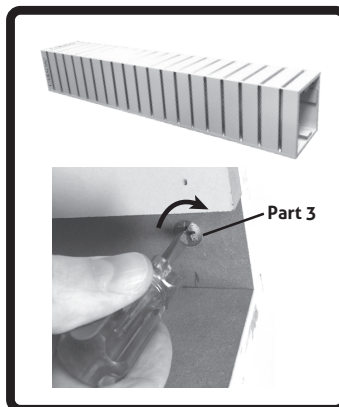
Step 2- Align 2 side pieces (part 1) at the corners so all 6 screws (part 2) fit into holes of adjacent side pieces (part 1) the entire way down. Press sides together.



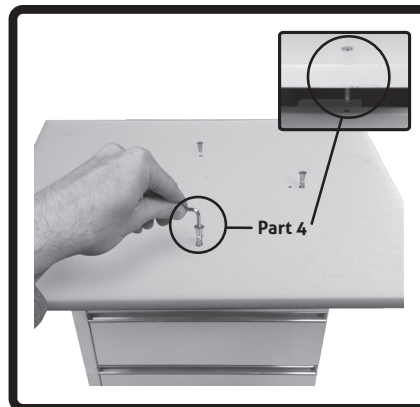
Step 3- After corner is created with 2 L-shaped sides, tighten all 6 cam lock fasteners (part 3) to secure. Repeat Step 2 and 3 to make A1 and A2.



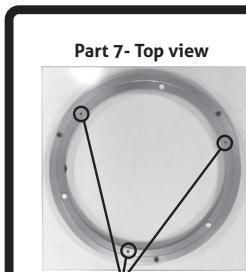
Step 4- Align A1 and A2 making sure all pegs are in the holes. Push A1 and A2 together to form one piece.



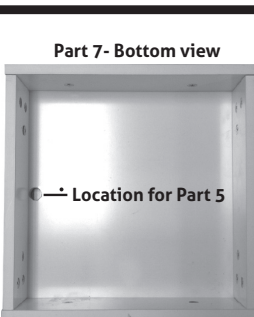
Step 5- Turn the entire display stack on its side to reach inside and secure the remaining 12 cam lock fasteners (part 3). Do not forget to tighten screws securely.



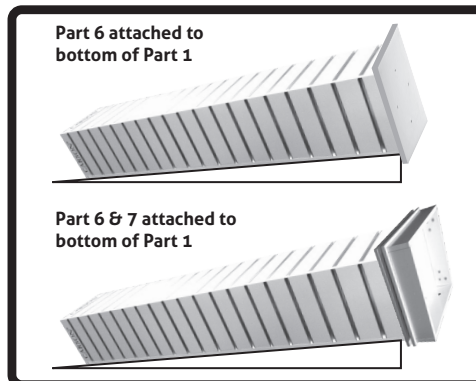
Step 6- Place (part 6) on bottom of (part 1) and align the holes of both parts. Then, use the allen key (part 9) to screw 8 allen key screws (part 4) into the underside of (part 1).



Location for Part 5 (Remove 3 plastic pieces with holes drilled all the way thru metal turner)



Step 7- The top of (part 7) will have 8 holes to screw (part 5) through and attach (part 7) to the display stack (part 1).



Step 8- Turn the display stack on its side and prop it up on an angle. This will allow you to hold (part 7) up to the bottom of the display stack for assembling them together. Make sure (part 6 & 7) are flush and square to each other before screwing (part 5) into each of the 3 holes of (part 7). There are NO lead-in holes for screws.



Step 9- Once the base is secure to the tower, slowly flip entire display upright and place Topper (part 8) on top. **Step 10-** Display comes with 36 plastic shelves. Place desired amount on display with music boxes as shown above.