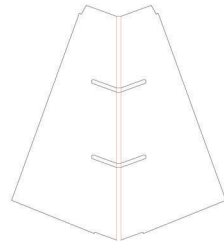
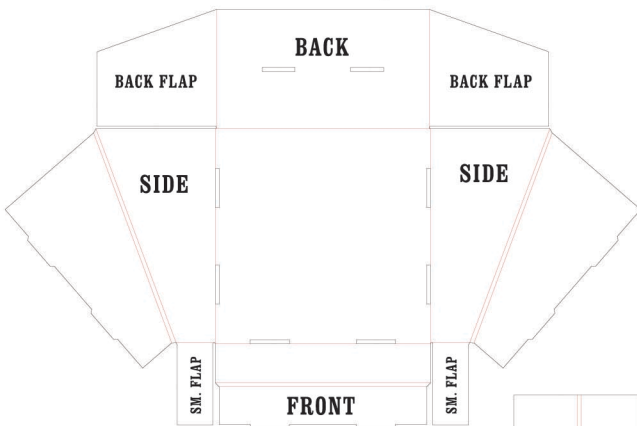


# MINI BLOCK DISPLAY INSTRUCTIONS

ITEM # 70168

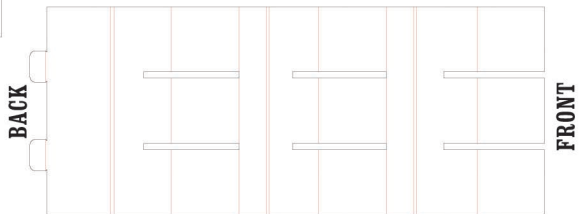
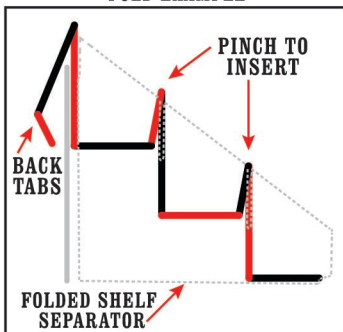
1. Lay main piece out flat with the printed part face down.
2. Fold back panel up, folding flaps inward
3. Fold sides up and over back flaps. Secure by pushing tabs into slots on the base.
4. Fold smaller flaps inward.
5. Fold front up and over the small flaps. Secure the tabs in the slots on the base.
6. Take the 2 shelf separators and fold in half along the fold line.
7. Take the shelf piece and fold as shown in the diagram below. Then slide the slotted areas into the slots on the folded shelf separators. The back slots will only rest on a groove on the back of the shelf separator piece.
8. Take the shelf piece with separators and place in the main piece allowing the top flap to come over the top of the main piece and insert tabs into holes on back.

## MAIN PIECE



**SHELF  
SEPARATOR  
X2**

## SHELF PIECE FOLD EXAMPLE



**SHELF PIECE**



**FINISHED**